

Proses Publikasi

Now that you have prepared the
manuscript / paper / article

Ir. Nurly Gofar, MSCE, PhD

Revising the paper

Co author 1



Co author 2



Co author 3



Pembimbing



Ok!

Please revise again
And send back to me

Please revise, and
submit

Ok!

Ok!

OK we can submit

Ok!

Final checking :
Polishing &
Proofreading

Check your references... **references cited should be listed...** **references listed should be cited**

Select suitable journal
see next slides

Is the paper ready?

- Don't Upload or Send A
POORLY WRITTEN PAPER –
Reviewers are watching
you!!!

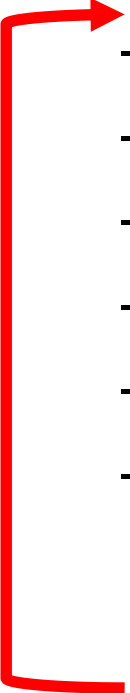
Tu'ti ukulahaa... do a little bit more

Ethics Issue in Publication

Scientific Misconduct

- Falsification of results (**Research integrity**)

Publication misconduct

- 
- Plagiarism **Similarity index 15 – 20% excluding references**
 - Duplicate submission
 - Duplicate Publication
 - Appropriate acknowledgement to previous researchers
 - Appropriate identification of all co-authors
 - Conflict of interest

Make sure to check your paper using

I-thenticate or **Turnitin** before submission

In case you decided to publish in a journal

Select suitable Journal

- There are a lot of platforms; the biggest one is Elsevier and Springer. **I feel this is the easiest one to deal with when submitting and resubmitting the paper, etc. Average success rate is 20%.**
- You can also select **other platforms** like Emerald, ICE, IEEE etc.
- Check websites and select journals with the suitable topic
- **If you have money** (or expect that you will get the money back once the paper is published, you can choose “paid journal” nothing wrong with that, just ensure the journal is indexed in scopus or web of science.

Select suitable Journal

- Once you know the name of the journal you want to submit to.
- Check the status of the journal in SJR Scimago journal search website
- Be careful with spelling and preposition (**some predatory journal has similar name with the highly respective journal**).
- Then copy paste the name of the journal in the website..... **If it is not there, it is not indexed in Scopus.**

Select suitable Journal

- From the website of the journal
- Check the Journal impact factor. You may want to consider this based on the content of your paper. **High impact factor** journal usually expect that the paper contain “Primary data” or “new invention”.
- In engineering field, the high impact journal prefer “Field data” than “Lab data”; Full scale test data than small scale test data

Impact factors are derived from citation indexes owned by Thomson Scientific:
Science Citation Index: Algorithms are used to analyse the data in these indexes and produce Journal Citation Reports (JCR)

Don't fall for Fake metric

Select suitable Journal

- From the website of the journal
- Consider the chief Editors (as one of you may know the editor (good or bad, avoid those with conflict of interest))
- Check the papers published in the journal (past 3-5 years) that match your intended paper
- Select 2 – 3 papers published in the journal to be used in your paper as reference (**remember citation matters for you and also for them**)

Select suitable Journal, other considerations

- Select journals with a faster & fair review process
- Select well known journals in your field
- Review citation details
- Consider the standard of your research results and your reputation (both) – self-assessment!!!!
- Try and match the journal with the quality of your research results
- Journals with a low impact factor are also good; it's better than NOT PUBLISHING
- Consult senior researchers / professors

Select suitable Journal,

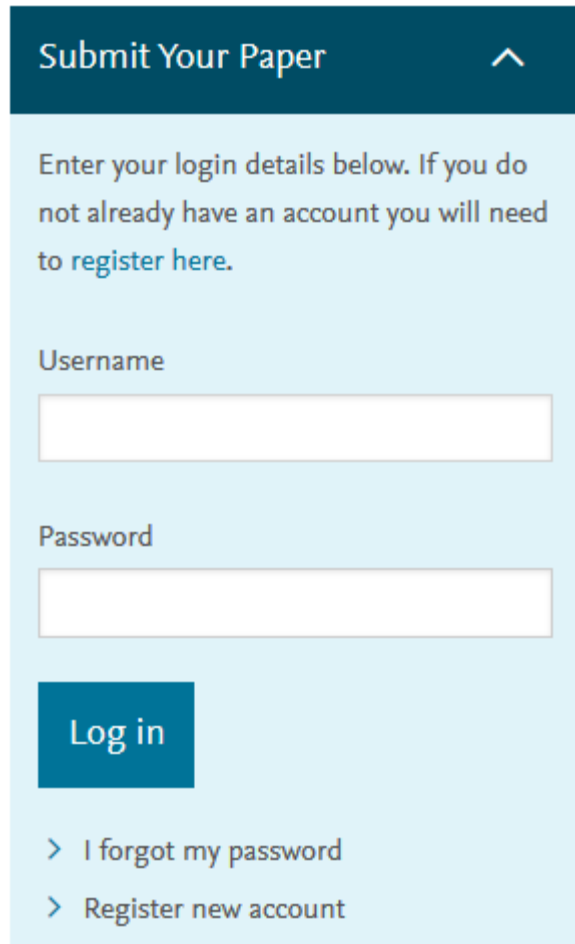
other considerations

- Print and Read the published papers in a recent issue (usually the journal provide some open access paper; highly cited paper etc.)
- Does your paper meet the same standard?
- Do you think they will accept your paper?
 - No – consider other journals or do more research or write conference papers
 - Yes – then you are all set



**Now you are ready to submit your
manuscript**

Register to the Journal



Submit Your Paper ^

Enter your login details below. If you do not already have an account you will need to [register here](#).

Username

Password

Log in

> I forgot my password

> Register new account

- Only the corresponding author need to register
- All Elsevier journals would have the same login and password because the accounts are consolidated
- For journal other than Elsevier, you need to register separately
- Register using verified university's email address give a better chance that your paper will be dealt with by the editor. Avoid using gmail/yahoo etc....
- You can submit your paper using the corresponding author's account (if he let you know the login and password) but any information from journal's editor will be sent to his/her email, thus he has to forward it to you immediately for proper action

Author Information Pack



ECOLOGICAL ENGINEERING

The Journal of Ecosystem Restoration

AUTHOR INFORMATION PACK

TABLE OF CONTENTS

•	Description	p.1
•	Audience	p.2
•	Impact Factor	p.2
•	Abstracting and Indexing	p.2
•	Editorial Board	p.2
•	Guide for Authors	p.4



ISSN: 0925-8574

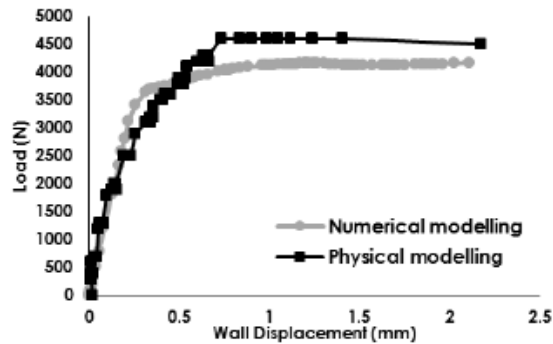
Submit the Manuscript

PREPARE

- Abstract
- Some journals require Graphical abstract. Some journal require Key message, 1 sentence of less than 200 characters. Some journals require highlights of the paper 4-5 sentences with less than 80 characters, please prepare these in advance.
- First page with Manuscript title and Names and address of all authors (make sure information of all authors is complete) (some journals will ask contribution of each author, please discuss prior to submission session)

Example of Graphical abstract

Graphical abstract



Abstract

The failure mechanism of backfill material for retaining wall was studied by performing a numerical analysis using the finite element method. Kaolin is used as backfill material and retaining wall is constructed by Polymer Concrete. The laboratory data of an instrumented cantilever retaining wall are reexamined to confirm an experimental working hypothesis. The obtained laboratory data are the backfill settlement and horizontal displacement of the wall. The observed response demonstrates the backfill settlement and displacement of the retaining wall from the start to completion of loading. In conclusion, numerical modelling results based on computer programming by ABAQUS confirms the experimental results of the physical modelling.

Keywords: Retaining wall; backfill material; ABAQUS; failure mechanism; kaolin

Example of Key message and Highlights

Key Message:

Structural cells, as a form of suspended pavement, increases the resistance of urban trees to uprooting failure by confining the roots from growing above ground surface.

Highlights

- RCA is used as alternative to GC as large particle component in planting soil mixture
- Hydraulic properties of RCA-TS were assessed through laboratory tests
- Infiltration characteristics RCA-TS was evaluated based on results of soil column test
- Filtration was assessed through changes in particle size distribution of RCA-TS
- The performance of RCA-TS was compared with GC-TS

Example of Author contribution statement

Author contribution statement HR: Corresponding author, Co-Principal Investigator, Content writing, Editing. NG: Numerical Analysis, Data Analysis, Content writing. NA: Data collection, Numerical Analysis, Content writing. ECL: Co-Principal Investigator, Content editing. LFO: Principal Investigator, Editing.

Structural Cell Contribution to Resistance of Trees to Uprooting

Rahardjo, H.^{1*}, Gofar, N.¹, Amalia, N.², Leong, E.C.¹, and Ow, L.F.³

3

Address of Authors:

Professor Hariyanto Rahardjo, Ph.D. (Corresponding author)

School of Civil and Environmental Engineering, Nanyang Technological University,

Block N1, #B1a-01a-36, 50 Nanyang Avenue, Singapore 639798

Tel: (65) 6790 4746

Fax: (65) 6791 0676

Email: chrhahardjo@ntu.edu.sg

Website: <http://www.ntu.edu.sg/cee/staff/infrastructure/academic/chrhahardjo.asp>

Dr. Nurly Gofar

Research Fellow

School of Civil and Environmental Engineering, Nanyang Technological University

Block N1, #B1a-01a-35, 50 Nanyang Avenue, Singapore 639798

Tel: (65) 82 80133

Email: nurlygofar@ntu.edu.sg

Nina Amalia

Project Officer

Environmental Process Modelling Centre (EPMC),

Nanyang Technological University

Block N1, #B1a-01a-37, 50 Nanyang Avenue, Singapore 639798

Tel: (65) 81 570644

Email: namalia@ntu.edu.sg

Dr. Leong Eng Choon

Associate Professor

School of Civil and Environmental Engineering, Nanyang Technological University

Block N1, #1C-80, 50 Nanyang Avenue, Singapore 639798

Tel: (65) 6790 4774

Fax: (65) 6791 0676

Email: cecileong@ntu.edu.sg

Dr. Ow Lai Fern

Senior Researcher,

Centre for Urban Greenery and Ecology, National Parks Board, Singapore Botanic Gar

1G Cluny Road, House 1 Singapore 259603

Tel: (65) 6462 6960

Fax: (65) 6762 1383

Email: genevieve_ow@nparks.gov.sg

Example of author contributions

A : Corresponding author, Co-Principal Investigator,
Content writing, Editing

B: Numerical Analysis, Data Analysis, Content writing

C: Laboratory Work, Field data

D: Co-Principal Investigator, Content writing, Editing

E: Principal Investigator, Editing

20 June 2016

Professor C.H. Juang

Editor-in-Chief

Engineering Geology

Subject: Submission of a manuscript to Engineering Geology

**"A study of failure characteristics of gently-inclination shallow landslides
occurred in Nanjiang, Southwest of China"**

By Shuai Zhang, Qiang Xu, and Qun Zhang

Dear Prof. Juang,

We would like to submit a manuscript entitled "A study of failure characteristics of
gently-inclined shallow landslides occurred in Nanjiang, Southwest of China" by
Shuai Zhang, Qiang Xu, and Qun Zhang for review and possible publication in
Engineering Geology as a research paper.

Thank you very much for your assistance.

Sincerely yours,

Qiang Xu

Submitting the manuscript

MAKE READY WITH YOU

- Your Text (the manuscript) (follow the journal format/guidance strictly)
- Usually double spacing 12 TNR with **line number**
- List of Figures & List of Tables (at the end of your text)
- Figures and Tables (usually figure in tiff or emw, should be submitted one by one)
- List of Potential Reviewer (make sure you have accurate information of the suggested reviewer)
- Cover Letter – your chance to speak to the editor directly



NANYANG
TECHNOLOGICAL
UNIVERSITY

School of Civil and Environmental Engineering

Cover letter, example

Reg. No. 200604393R

22 August 2016

Dr. R.J. Bathurst, Editor
Geosynthetics International
GeoEngineering Centre at Queen's-RMC
Civil Engineering Department
13 General Crerar, Sawyer Building, Room 2414
Royal Military College of Canada Kingston,
Ontario K7K 7B4 CANADA

Dear Professor Bathurst,

We are submitting the manuscript for possible publication of research article in Geosynthetics International Journal:

"Effect of Geosynthetics Interface on Water Infiltration through Capillary Barrier System "

By: H. Rahardjo¹, N. Gofar², F. Harnas³, A. Satyanaga⁴

Could you please acknowledge upon receipt of the manuscript.

Thank you.

Yours sincerely,

Suggest Potential reviewer

- Your suggestion will help the editor to pass your manuscript to review stage more efficiently
- Generally you are required to propose 3 – 6 names
- Find your potential reviewer from the reference of your manuscript (the one that you agree about)
- The reviewers should represents two geographical regions
- Potential reviewer **should not be** your past supervisor or your close friend (based on your research work)
- Some journals will ask if you want to be reviewed by this person or you want to avoid this person.

Final stage before clicking the submission button

- There will be a list of the things you have submitted
- Check the figures... some times the figures will come out differently from the original, some will be black; if this is the case you must redo the figures
- Ask another co-author to check together
- When everything is ok

Bismillahirrohmanirrohim



and click the submit button



After you click the submit button



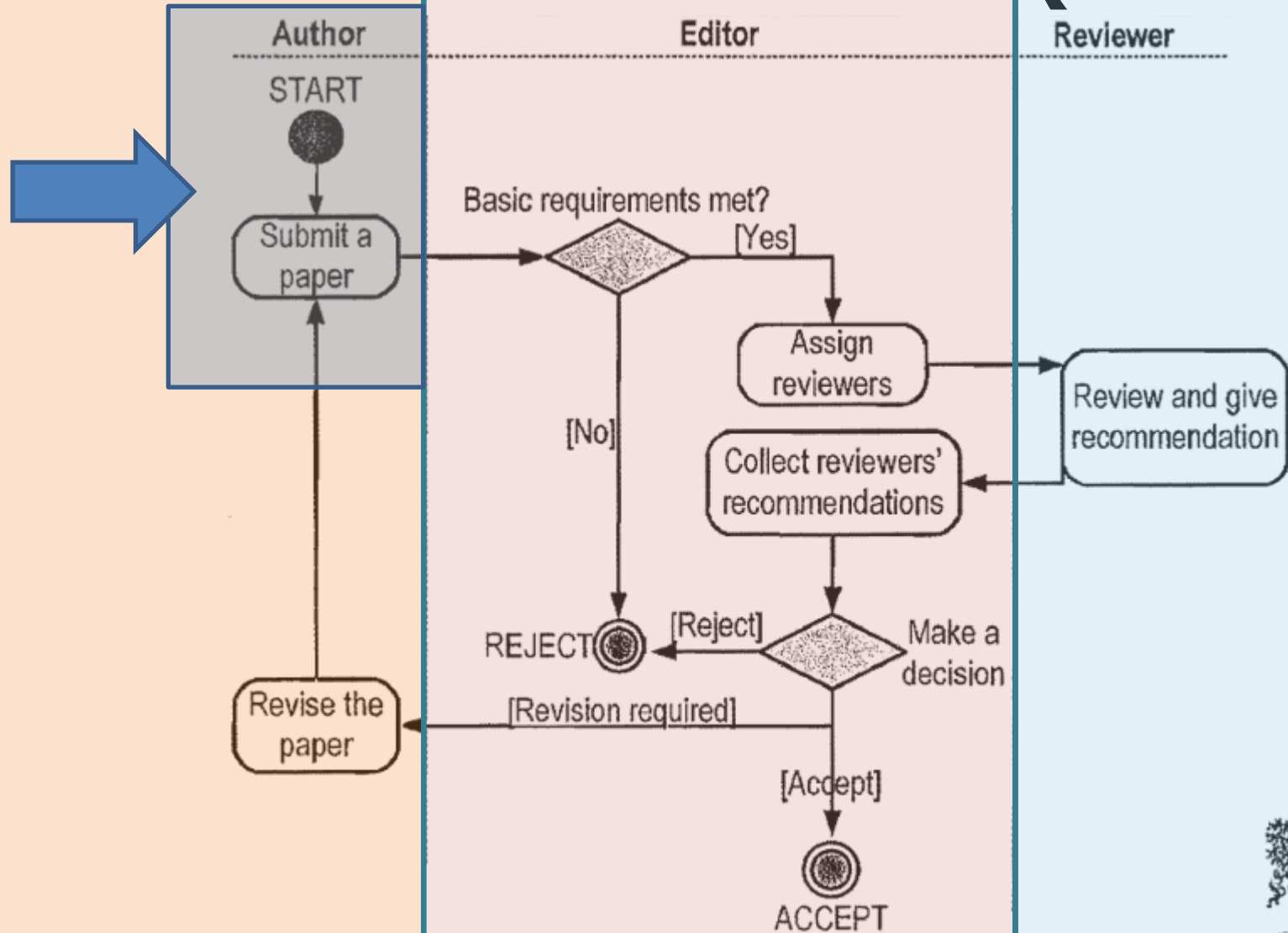
- Once you click the submit button, your paper will be assigned a (**temporary**) number. The corresponding author should receive an email. The other authors will receive a carbon copy of the email.
- Some journal will ask for copyright agreement at this stage. **This is an online procedure.** All authors should understand what to do. Since this is a legal procedure, some authors (**especially PI from outside university**) may not understand, then you should teach them or do it for him/her immediately.

After you click the submit button



- Some journals do not ask for copyright but check if all authors agree that his/her name is listed. Please make sure everybody reply to the email from editor and agree as one of the author.
- At this stage the editor will check the manuscript. If the topic & content of the manuscript is not within the coverage of the journal, he will reject it right away and inform you.
- Otherwise he will proceed to select reviewer of the manuscript. At this stage the manuscript number will change to the actual number. Editor will send email to corresponding author. If not, you need to check the website and keep the number for future communication and make sure that the status of the manuscript is **under review**.

Peer Review Process (Elsevier)



Remember

Avoid dual publication

Do not use other's work
without appropriate
attribution

Write the final
manuscript

List only co-authors who
contributed substantially
to the work

Acknowledgement
(technical help &
financial assistance)

Thanks for your
attention

